

RESEARCH

Open Access

Overexpression of proto-oncogene FBI-1 activates membrane type 1-matrix metalloproteinase in association with adverse outcome in ovarian cancers

LiLi Jiang^{1,3}, Michelle KY Siu¹, Oscar GW Wong¹, Kar Fai Tam², Eric W-F Lam⁴, Hextan YS Ngan², Xiao-Feng Le⁵, Esther SY Wong¹, Hoi Yan Chan¹, Annie NY Cheung^{1*}

Abstract

Background: FBI-1 (factor that binds to the inducer of short transcripts of human immunodeficiency virus-1) is a member of the POK (POZ and Kruppel) family of transcription factors and play important roles in cellular differentiation and oncogenesis. Recent evidence suggests that FBI-1 is expressed at high levels in a subset of human lymphomas and some epithelial solid tumors. However, the function of FBI-1 in human ovarian cancers remains elusive.

Results: In this study, we investigated the role of FBI-1 in human ovarian cancers, in particularly, its function in cancer cell invasion via modulating membrane type 1-matrix metalloproteinase (MT1-MMP). Significantly higher FBI-1 protein and mRNA expression levels were demonstrated in ovarian cancers samples and cell lines compared with borderline tumors and benign cystadenomas. Increased FBI-1 mRNA expression was correlated significantly with gene amplification ($P = 0.037$). Moreover, higher FBI-1 expression was found in metastatic foci ($P = 0.036$) and malignant ascites ($P = 0.021$), and was significantly associated with advanced stage ($P = 0.012$), shorter overall survival ($P = 0.032$) and disease-free survival ($P = 0.016$). *In vitro*, overexpressed FBI-1 significantly enhanced cell migration and invasion both in OVCA 420 and SKOV-3 ovarian carcinoma cells, irrespective of *p53* status, accompanied with elevated expression of MT1-MMP, but not MMP-2 or TIMP-2. Moreover, knockdown of MT1-MMP abolished FBI-1-mediated cell migration and invasion. Conversely, stable knockdown of FBI-1 remarkably reduced the motility of these cells with decreased expression of MT1-MMP. Promoter assay and chromatin immunoprecipitation study indicated that FBI-1 could directly interact with the promoter spanning ~600bp of the 5'-flanking sequence of MT1-MMP and enhanced its expression in a dose-dependent manner. Furthermore, stable knockdown and ectopic expression of FBI-1 decreased and increased cell proliferation respectively in OVCA 420, but not in the *p53* null SKOV-3 cells.

Conclusions: Our results suggested an important role of FBI-1 in ovarian cancer cell proliferation, cell mobility, and invasiveness, and that FBI-1 can be a potential target of chemotherapy.

Background

Ovarian cancer is the leading cause of death among gynecologic malignancies worldwide, and the survival rates remain disappointing for patients suffering from advanced cancers [1,2]. Development of cancer

metastasis is the major cause that kills patients with ovarian cancer. However, the molecular mechanisms contributing to its aggressiveness are still not fully understood.

In the past decade, it has been established that the matrix metalloproteinases (MMPs), including Membrane-type-1 MMP (MT1-MMP or MMP14) and MMP-2, play a critical role in degrading the basement membrane and the extracellular matrix (ECM),

* Correspondence: anycheun@hkucc.hku.hk

¹Department of Pathology and, The University of Hong Kong, HKSAR, China
Full list of author information is available at the end of the article

resulting in tumor cell dissemination and outgrowth of secondary cancers [3,4]. MT1-MMP not only directly cleaves ECM components, but also functions as the main activator of MMP-2 [5,6]. Conversely, tissue inhibitor of metalloproteinase-2 (TIMP-2) inhibits MMP-2 after binding with its hemopexin domain [7,8]. As in other solid cancers, MT1-MMP has been reported to be widely expressed in ovarian cancers and related malignant ascites of all histological types, but not in normal ovarian epithelium or benign tumors [9-12]. Despite the central role of MT1-MMP in these cancer metastases, little is known about its transcriptional regulators [13].

FBI-1 (also known as POKEMON, LRF in mouse, or OCZF in rat), which was originally identified as a factor that binds to the inducer of short transcripts (IST) element of human HIV-1 genome [14], is a member of the POK (POZ and krüppel) family of transcription factor. Recent reports revealed the participation of FBI-1 in NF- κ B activation [15], adipogenesis [16], lymphocyte differentiation [17], and oncogenesis [18-21]. Emerging studies have shown that FBI-1 is strongly expressed in

diffuse large B-cell lymphoma, follicular lymphoma, breast, lung, colon, prostate and bladder carcinomas [18,22]. However, its role in ovarian tumors has not been reported.

In the current study, we have illustrated a novel mechanism that may account for the aggressiveness and poor prognosis of human ovarian cancer. We showed that FBI-1 interacted and activated MT1-MMP, increased cell motility and invasion of ovarian cancer. FBI-1 is significantly up-regulated in advanced stages of ovarian cancer and associated with overall and disease free survival of patients with ovarian tumors.

Results

Overexpression of FBI-1 protein in ovarian tumors and cancer cell lines

The differential expression of FBI-1 in the various categories of ovarian tumors was shown in Figure 1A, and its association with clinical-pathological parameters was summarized in Table 1. All 10 benign cystadenomas (3 serous and 7 mucinous) were completely negative for FBI-1 staining, while 15 out of 19 (78.9%) borderline

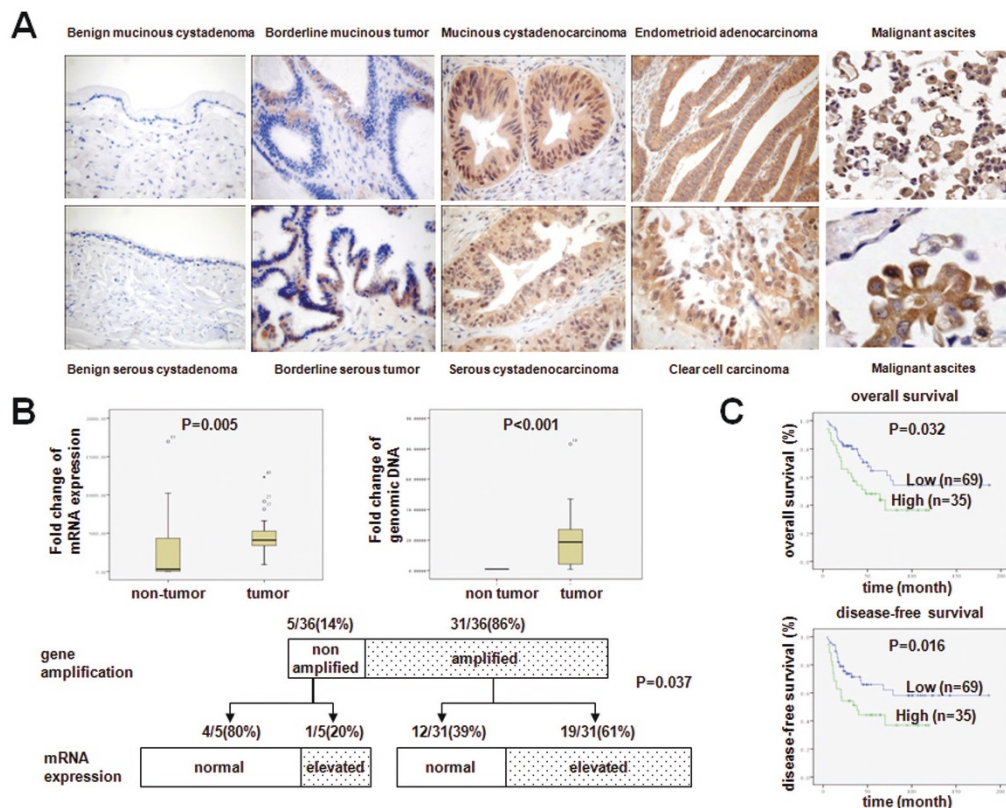


Figure 1 FBI-1 was overexpressed in ovarian tumors and correlated with prognosis of patients. A, Representative images of FBI-1 immunoreactivity in different ovarian tumor subtypes and malignant ascites (20 \times) (bottom right; 200 \times). B, mRNA expression (upper left panel) and gene amplification status (upper right panel) of FBI-1 in clinical samples and the correlation of gene amplification patterns with mRNA expression (lower panel). C, High expression of FBI-1 was associated with poor overall and disease-free survival.

Table 1 Association analysis between FBI-1 expression and the clinicopathological features of ovarian cancers

		Case assessed	Score (mean ± SE)	p-value
Diagnostic categories	Benign	10	0	0.000 ^a
	Borderline	19	7.83 ± 0.92	0.000 ^a , 0.000 ^b
	Primary cancer	111	12.31 ± 0.37	0.000 ^a
	Metastatic foci	63	13.47 ± 0.46	0.036 ^c
	Malignant ascites	17	14.11 ± 0.87	0.021 ^c
Histological types of ovarian cancer	Serous	43	12.53 ± 1.04	0.070 ^d
	Endometrioid	36	11.82 ± 0.66	
	Clear cell	23	12.76 ± 0.53	
	Mucinous	9	12.11 ± 1.17	
Stage	Stage I	42	11.30 ± 0.67	0.012 ^e
	Stage II-IV	69	13.38 ± 0.42	
Grade	Low (grade I)	32	12.22 ± 0.73	0.151 ^f
	High (grade II and III)	79	12.39 ± 0.44	
Response to primary chemotherapy	Sensitive	78	12.14 ± 0.45	0.246 ^g
	Resistant	18	13.22 ± 0.92	
Survival months	0.53~188.57 (average: 44.7)			

^a p Value reflects the comparison of each category vs. benign tumor.

^b p Value reflects the comparison of primary cancer vs. borderline.

^c p Value reflects the comparison of metastatic foci or malignant ascites versus primary cancer.

^d p Value reflects the comparison of clear cell carcinoma versus all the other histological types combined.

^e p Value reflects the comparison of stage I versus stage II-IV.

^f p Value reflects the comparison of low grade versus. high grade.

^g p Value reflects the comparison of chemosensitive versus chemoresistant.

tumors (7 serous and 12 mucinous) showed weak and focal immunoreactivity (score ≤9). Among the 111 ovarian cancers, 82 (73.8%) cases displayed obvious overexpression of FBI-1 at a high level (score ≥12) both in the cytoplasm and nuclei. Significant higher expression of FBI-1 was found in borderline tumors ($P < 0.001$) and cancers ($P < 0.001$) when compared with benign counterparts. Expression of FBI-1 in cancers was also significantly higher than that in borderline tumors ($P < 0.001$). However, there was no significant difference among the four major histological types of ovarian cancers (Table 1).

Western blot analysis showed that FBI-1 expression was up-regulated in 11 out of the 13 (84.6%) ovarian cancer cell lines (OVCAR3, OC316, DOV13, ES2, OVCA 420, SKOV-3, TOV21G, TOV112 D, SW626, 2780 S, and 2780CP) when compared with two nontumorigenic immortalized human ovarian surface epithelial cell (HOSE) lines (Figure 2A).

Gene amplification contributes to the overexpression of FBI-1 mRNA

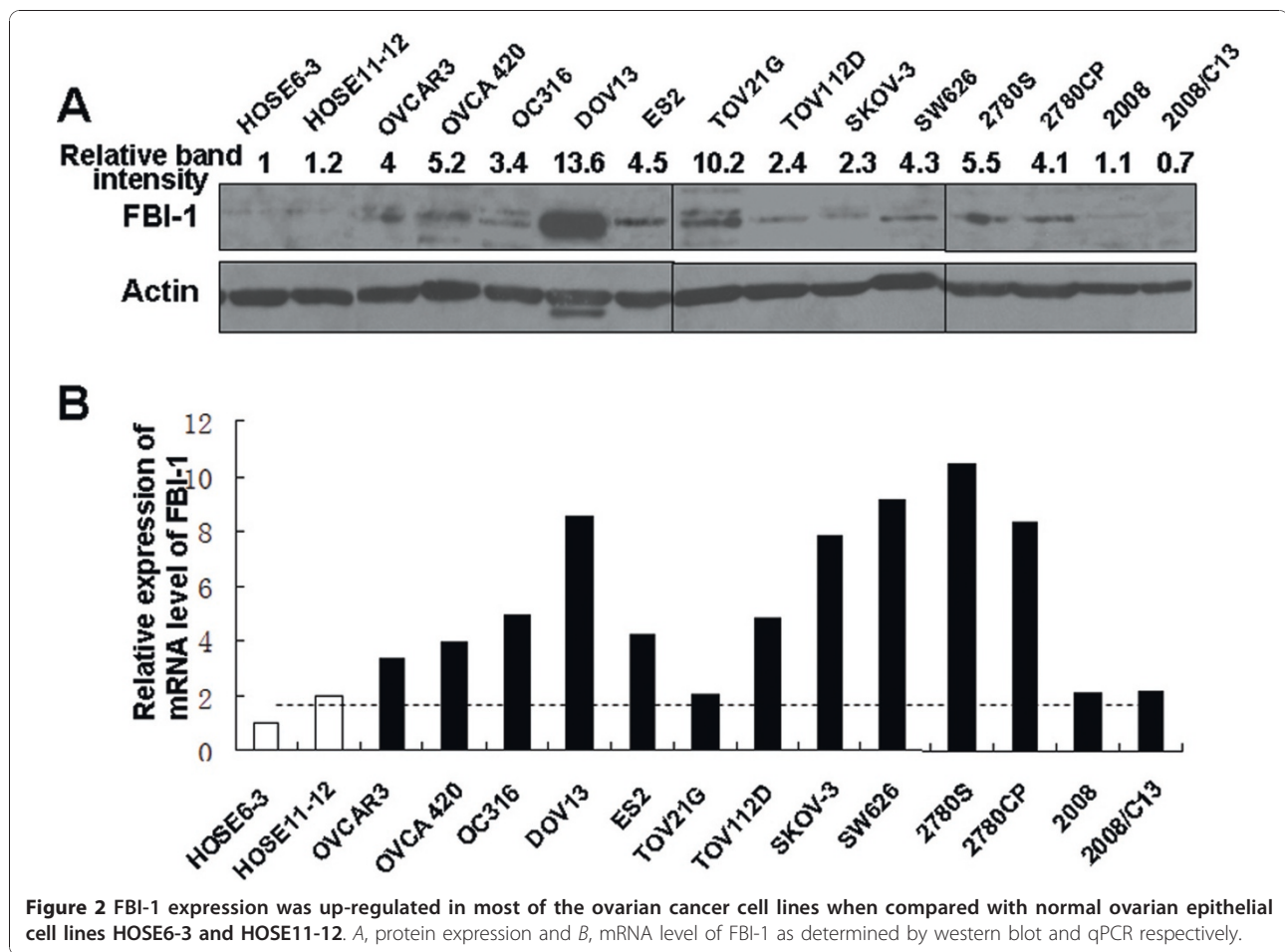
In a cohort of 36 pairs of clinical frozen samples, the mRNA level of FBI-1 was found to be significantly up-regulated in ovarian cancers when compared with corresponding non-tumor counterparts ($P = 0.005$) by qPCR (Figure 1B, left upper panel). Ten of the 13 (76.2%)

ovarian cancer cell lines also displayed up-regulation of FBI-1 at mRNA level when compared with the average of HOSE6-3 and HOSE11-12 (Figure 2B), although a heterogeneous expression profile was observed.

To evaluate the mechanisms underlying the increase in FBI-1 expression, genomic DNA copy number of FBI-1 was further evaluated in these 36 pairs of patient samples using qPCR (Figure 1B, right upper panel). Remarkably, 31 out of 36 (86%) cancers displayed gene amplification of FBI-1 when compared with the corresponding non-tumor counterparts (Figure 1B, lower panel). Among the 31 amplified cases, 19 (61%) showed elevated mRNA levels. In the 5 non-amplified cases, increased mRNA expression of FBI-1 was only found in one case (20%). Spearman's rho test demonstrated that elevated RNA transcription of FBI-1 was closely correlated with its gene amplification ($P = 0.037$), suggesting that gene amplification was an important mechanism leading to the overexpression of FBI-1 in ovarian cancers.

FBI-1 overexpression was significantly associated with aggressive tumor behavior and poor outcome

In addition to primary cancer samples, 63 metastatic foci in the lymph node, ligament, gut, and uterine serosa derived from advanced ovarian cancers and 17 ascitic samples were also used for evaluating FBI-1 protein expression by immunohistochemistry. Significant up-regulation of



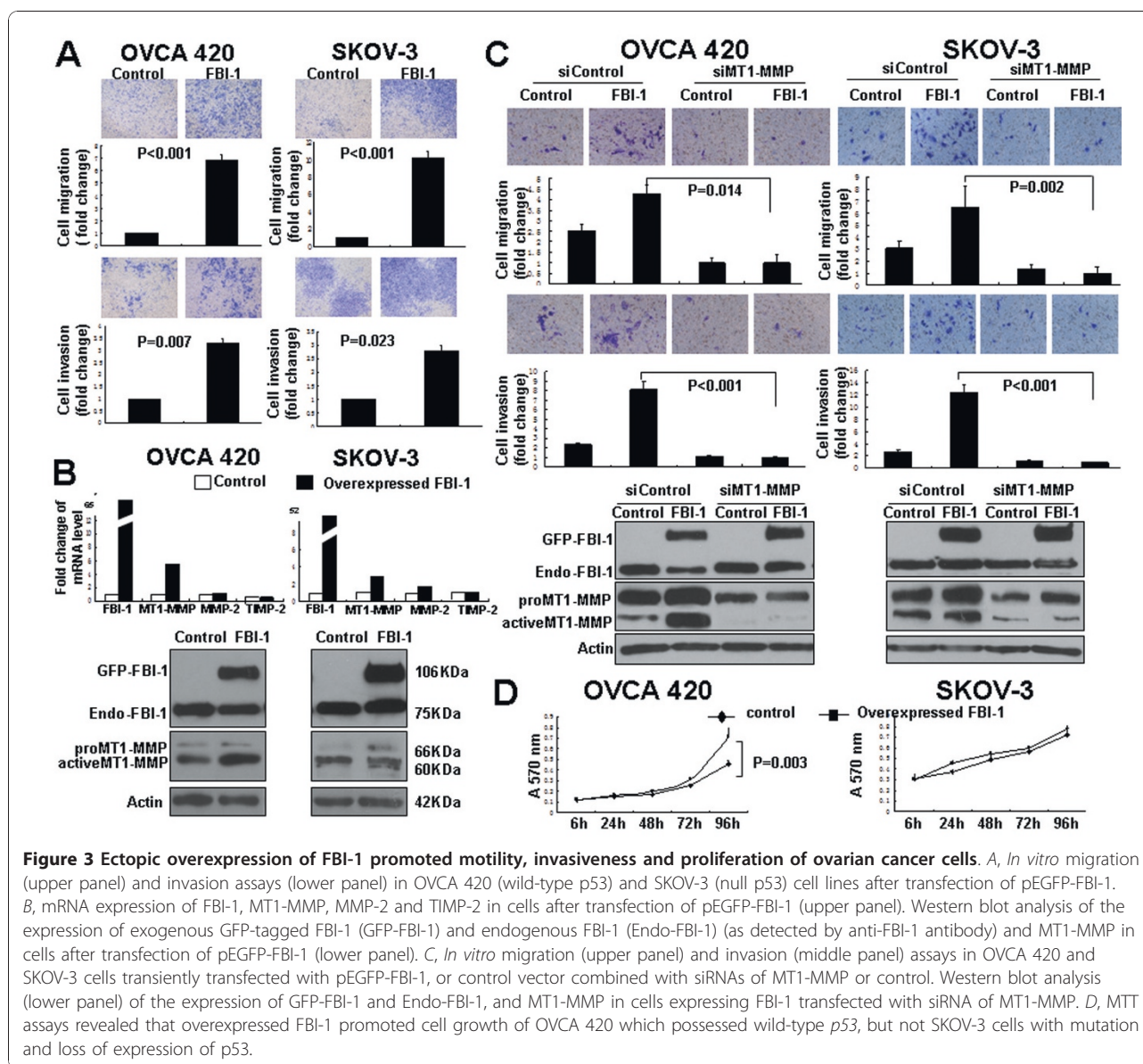
FBI-1 expression was detected in metastatic foci ($P = 0.036$) and malignant ascites ($P = 0.021$) (Figure 1A), compared with primary malignancies (Table 1). Moreover, higher FBI-1 expression was also found to be closely associated with advanced stage (stage II-IV) ($P = 0.012$) (Table 1), poor overall survival ($P = 0.032$) and disease-free survival ($P = 0.016$) (Figure 1C). Nevertheless, there was no significant correlation between FBI-1 immunoreactivity and histological grade ($P = 0.151$) or chemosensitivity ($P = 0.246$). Although increased FBI-1 significantly correlated with survival as mentioned above, multivariable analysis showed that expression of FBI-1 was not an independent predictor of overall survival (95% CI = 0.971-1.089, $P = 0.344$), or disease-free survival (95% CI = 0.896-1.080, $P = 0.729$). Together, our findings indicated that FBI-1 may affect the prognosis of patients with ovarian cancer via its effect on cancer progression.

FBI-1 promoted cell migration and invasion of ovarian cancer with up-regulation of MT1-MMP

To further assess the function of FBI-1 on aggressive behavior of ovarian cancer cells, OVCA 420 (harboring

wild-type *p53*) and SKOV-3 (possessing a single nucleotide deletion at point 267 at codon 90 of *p53*, which blocks *p53* expression [23]) cells were transiently transfected with pEGFP-FBI-1, followed by performing cell migration and invasion assays. Among the various ovarian cancer cell lines, OVCA 420 and SKOV-3 showed average levels of FBI-1 expression.

Up to 7 and 10-fold increase in cell migration were observed in OVCA 420 and SKOV-3 cells (both $P < 0.001$) (Figure 3A, upper panel) after transfection of pEGFP-FBI-1. About 3-fold increase in cell invasion was also observed in OVCA 420 ($P = 0.007$) and SKOV-3 ($P = 0.023$) cells (Figure 3A, lower panel). Next, the mRNA and protein expressions of FBI-1, MT1-MMP, MMP-2 and TIMP-2 were investigated. qPCR analysis showed that along with the induced FBI-1 mRNA expression, MT1-MMP, but not MMP-2 or TIMP-2, mRNA expression was increased by 3 to 6 fold after transfection of pEGFP-FBI-1 (Figure 3B, upper panel). Western blot analyses using anti-FBI-1 antibody also showed ectopic expression of exogenous GFP-tagged FBI-1 (106KDa) while no change in endogenous FBI-1 (75KDa) was



found. An up-regulation of total and active form of MT1-MMP protein in both OVCA 420 and SKOV-3 cells after transfection of pEGFP-FBI-1 was also demonstrated (Figure 3B, lower panel). No significant change in MMP-2 and TIMP-2 expression was observed (data not shown).

To test whether MT1-MMP is involved in FBI-1-mediated cell migration and invasion, OVCA 420 and SKOV-3 cells were transiently transfected with pEGFP-FBI-1 and siRNA of MT1-MMP. Transient knockdown of MT1-MMP inhibited both basal and FBI-1-enhanced cell migration and invasion (Figure 3C; all P values < 0.05).

To further substantiate the notion that FBI-1 conferred to ovarian cancer cell motility and invasiveness, OVCA 420 and SKOV-3 cells with stably knockdown

FBI-1 were established and subjected to transwell assays. Consistent with previous results, for both cell lines, a reduction in the number of migrated and invaded cells ($p < 0.05$) was significantly associated with a decrease in MT1-MMP mRNA and protein levels, in particular the active form of the MT1-MMP (Figure 4A, B).

Knockdown of FBI-1 reduced ovarian cancer cell mobility irrespective of p53 status

As OVCA 420 and SKOV-3 have different p53 status, it is likely that FBI-1 may affect the cell migration and invasion in a p53-independent manner. To test this hypothesis, migration and invasion assays were performed on SKOV-3 cells harboring stable knockdown

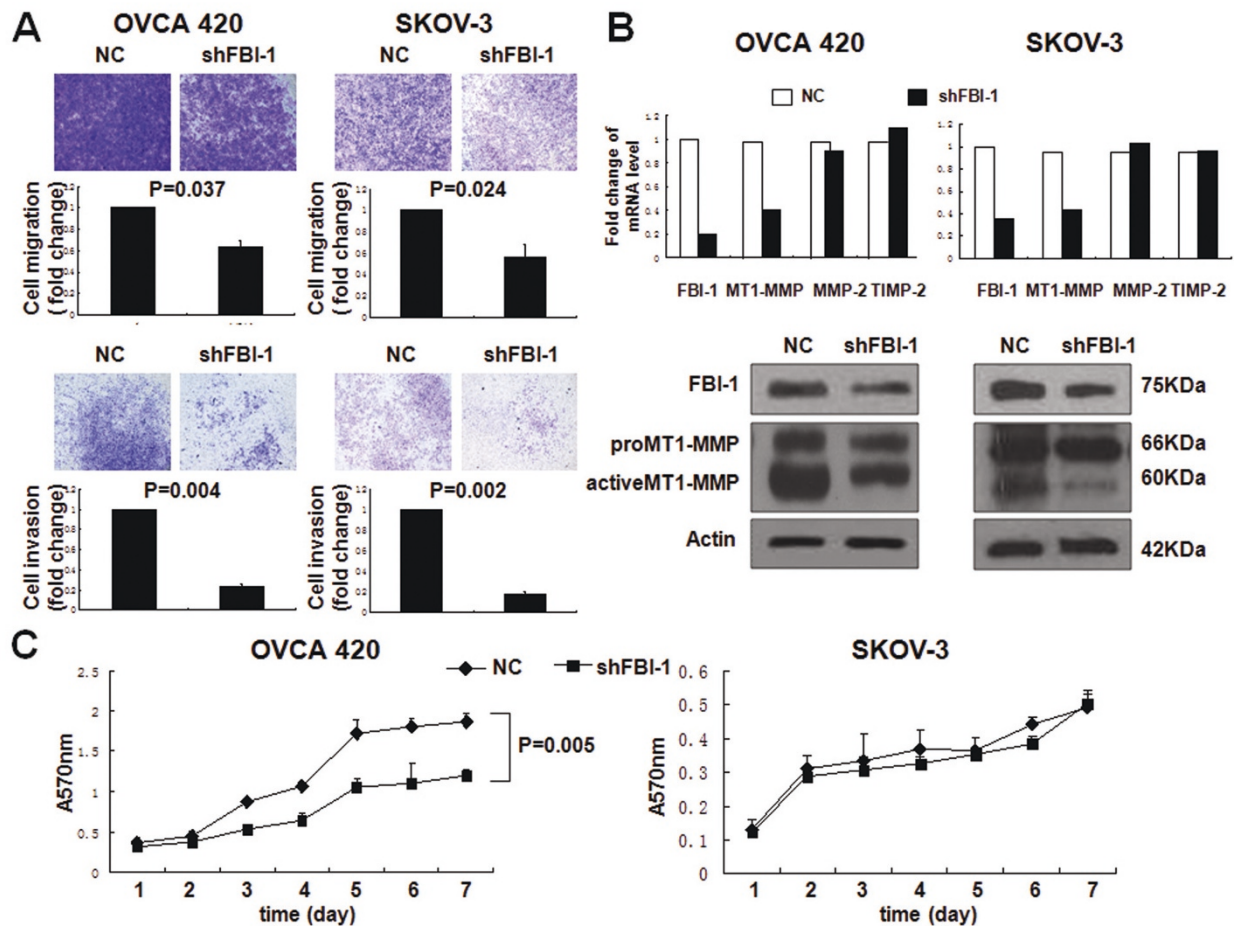


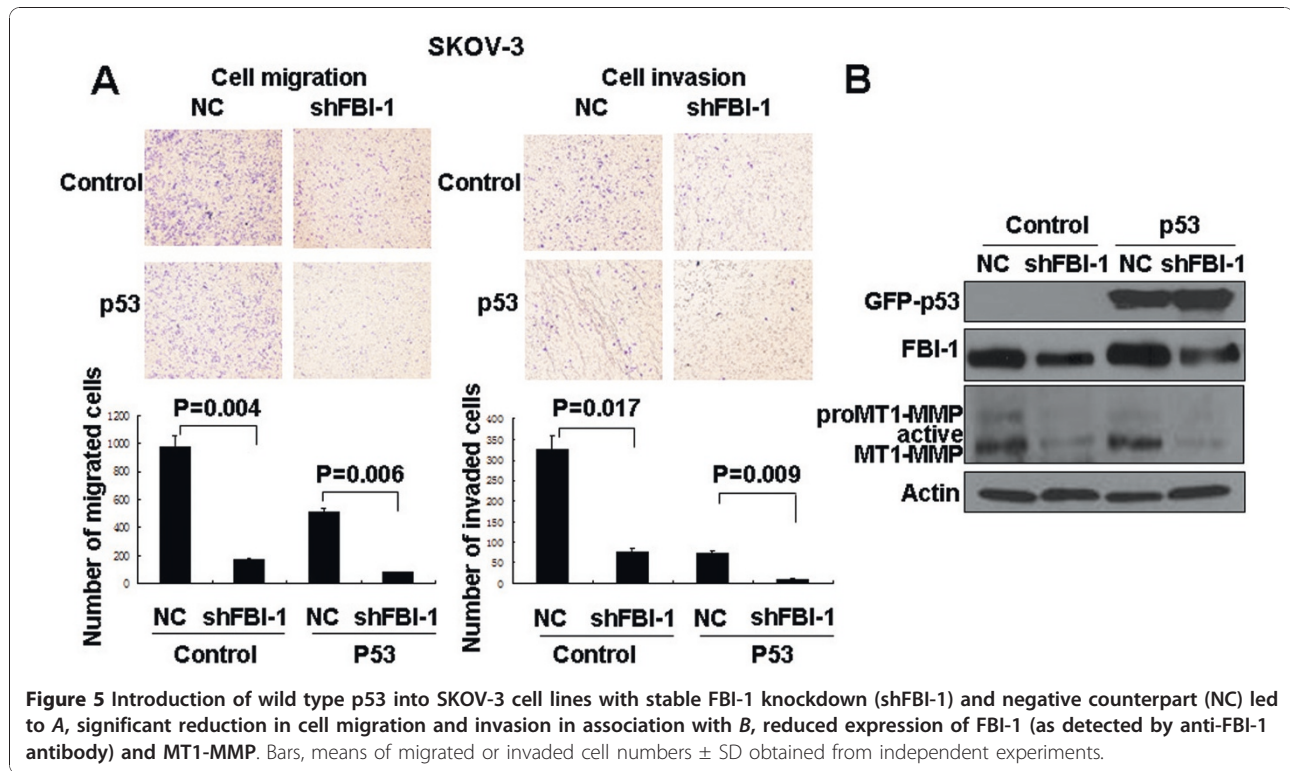
Figure 4 Stable knockdown of FBI-1 with shRNA reduced motility, invasiveness and proliferation of ovarian cancer cells. *A*, *In vitro* migration (upper panel) and invasion assays (lower panel) in OVCA 420 and SKOV-3 cell lines after stable knockdown of FBI-1. *B*, mRNA expression of FBI-1, MT1-MMP, MMP-2 and TIMP-2 in FBI-1 depleted cells (upper panel). Western blot analysis of the expression of FBI-1 (as detected by anti-FBI-1 antibody) and MT1-MMP in FBI-1 depleted cells (lower panel). *C*, Concurring with findings shown in Figure 3C, reduction of cell proliferation following FBI-1 knockdown was found exclusively in OVCA 420 cells with intact p53 function.

FBI-1 with or without re-induction of wild-type p53. In both stable shFBI-1 cells with or without re-expression of wild-type p53, similar decreases in cell invasion and migration ($p < 0.05$) were observed, which were again accompanied by a reduction of MT1-MMP expression compared with the negative control (NC) (Figure 5A, B). Together, these results suggested that FBI-1 play an important role in ovarian cancer cell invasion, migration, and metastasis, and this function of FBI-1 is mediated at least in part through its regulation of MT1-MMP expression but is independent of p53 status.

FBI-1 directly interacts with the promoter of MT1-MMP and enhanced its expression

The ability of FBI-1 to modulate both MT1-MMP mRNA and protein levels suggested that FBI-1 may

regulate MT1-MMP expression at transcriptional level. FBI-1 binding sites have recently been characterized [18], and three putative FBI-1 consensus sequences could be identified within ~450bp upstream of the transcription start site of the *MT1-MMP* gene [24]. A DNA fragment corresponding to an approximately 600bp of the 5'-flanking sequence of *MT1-MMP* was subcloned upstream of a luciferase reporter assay and used for gene promoter analysis. Firstly, we investigated whether FBI-1 would affect *MT1-MMP* gene transcription activity in OVCA 420 and SKOV-3 cells after stable FBI-1 knockdown. FBI-1 depletion reduced the *MT1-MMP* promoter activity in both cell lines by 3 and 4-fold when compared with the negative controls, respectively (Figure 6A). Secondly, the pGL3-Basic-*MT1-MMP*-Luc reporter was co-transfected with increasing amounts of pEGFP-C3-FBI-1 construct. The result showed that FBI-



1 efficiently enhanced *MT1-MMP* promoter activity in a dose-dependent manner (Figure 6B). Yet, FBI-1 expression showed no significant effect on *MMP-2* promoter by luciferase reporter assay (data not shown).

In an attempt to further elucidate the induction of *MT1-MMP* transcription by FBI-1, a luciferase reporter construct containing 94bp of the human *MT1-MMP* promoter (pGL3-Basic-shortMT-MMP-luc) was applied for gene promoter analysis. Theoretically, there is no FBI-1 DNA binding site in this short MT-MMP-luc sequence [18,24]. Our result showed that overexpression of FBI-1 could not enhance the transcriptional activity of this short form of *MT1-MMP* promoter (data not shown), further supporting the specificity of the transcription regulatory effect of FBI-1 on *MT1-MMP* gene.

We next examined whether FBI-1 can bind to the endogenous *MT1-MMP* promoter *in vivo* using the ChIP assays. Total lysates from parental OVCA 420 and SKOV-3 cells were used as the input samples and positive control, while immunoprecipitated lysates without antibody served as the negative controls. As shown in Figure 6C, FBI-1 bound directly to the promoter region of *MT1-MMP* gene.

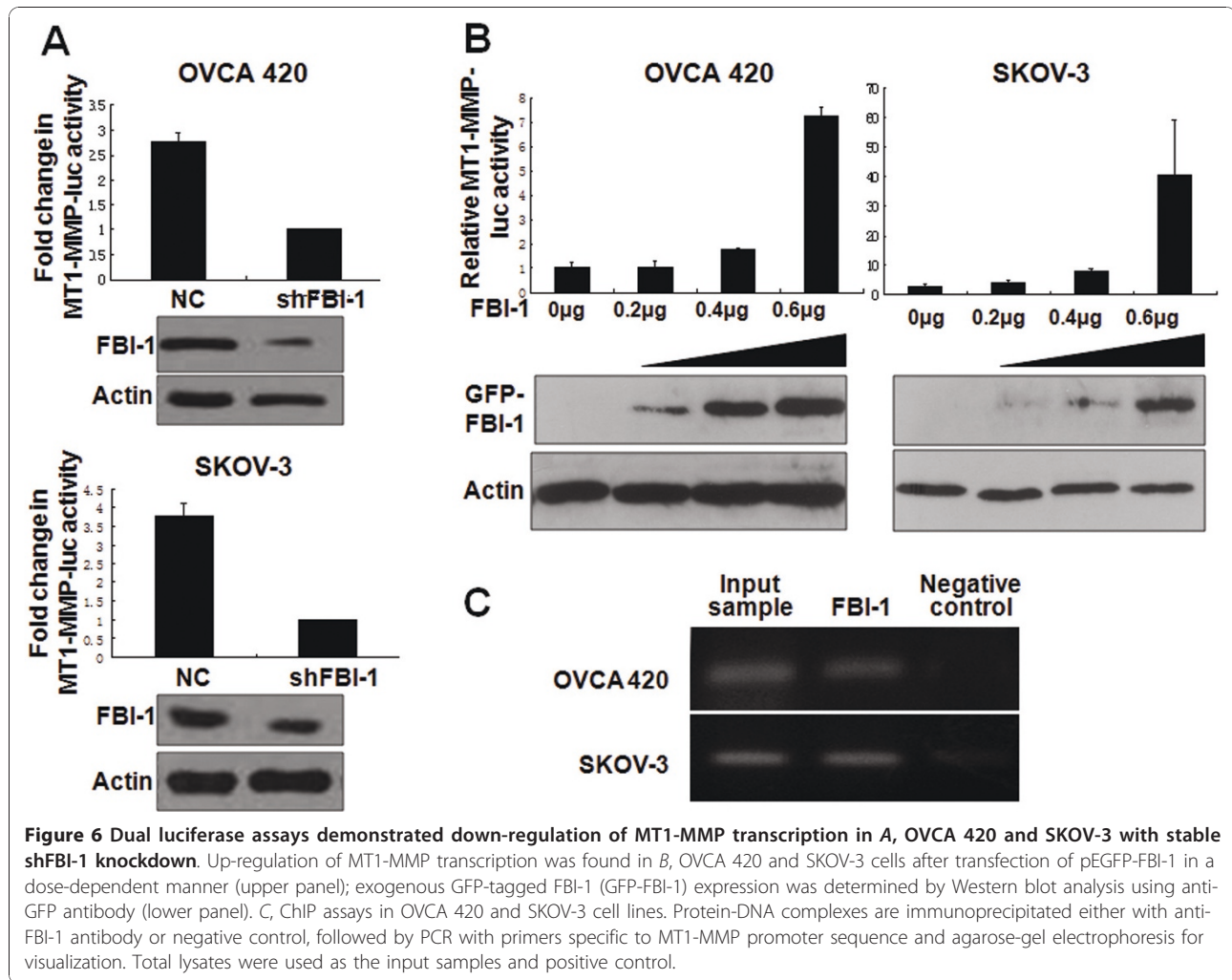
FBI-1 promoted ovarian cancer cell proliferation in a p53-dependent manner

In addition, we also investigated whether FBI-1 could affect cell proliferation using MTT assay. Introduction

of FBI-1 into OVCA 420 cells with wild-type *p53* resulted in an approximately 2-fold enhancement in cell proliferation ($P = 0.003$) (Figure 3D). In contrast, there was no significant effect in SKOV-3 cells which have no *p53* expression. Consistent with these findings, stable silencing of FBI-1 in OVCA 420 cells led to a significant decrease in cell proliferation, whereas no significant changes were observed in SKOV-3 cells (Figure 4C). The results indicated that the FBI-1 may modulate ovarian cancer cell proliferation in a p53-dependent manner.

Discussion

Since ovarian cancer is often asymptomatic until it has extensive extra-ovarian spread, the high lethality of this disease is at least partly attributed to the fact that patients are often at an advanced stage at the time of first diagnosis [25]. Therefore, a more precise understanding of the genetic mechanisms that control cancer cell dissemination is important. In this report, we established for the first time that vast majority of ovarian cancers produced aberrantly high levels of FBI-1 when compared with benign or borderline tumors. Overexpression of FBI-1 was also observed in most of the ovarian cancer cell lines. Clinicopathological analysis indicated that high expression of FBI-1 was associated with advanced stage, shorter overall and disease-free survival. The cancer cells at metastatic foci and



malignant ascites stemmed from advanced diseases expressed significantly higher levels of FBI-1 when compared with the primary cancers, supporting a role of FBI-1 in the dissemination of ovarian cancer. Using cell line models, we further provided evidence supporting that FBI-1 plays a significant role in migration, invasion, and proliferation of ovarian cancer.

FBI-1 is encoded by the *ZBTB7A* gene at chromosome 19p13.3. To date, little is known about the mechanism leading to *FBI-1* up-regulation in cancer. In non-Hodgkin B-cell lymphoma, t(14;19)(q32;p13.3) translocation was reported and aberrant activation of upstream regulators was speculated to be involved in its up-regulation [26]. Recently, *FBI-1* gene amplification was found to be a frequent event in non-small cell lung cancer [22]. Indeed, a remarkable proportion of our ovarian cancers (86%) displayed more than two-fold amplification of *ZBTB7A* gene and the gene amplification status was significantly correlated with its elevated expression at transcriptional level.

Previous reports suggested that the key role of FBI-1 in oncogenesis is to act as a potent inhibitory regulator of the tumor suppressor gene *p14^{ARF}*, subsequently leading to MDM2 constitutive activation and p53 degradation [18,27]. Taking advantage of ovarian cancer cell lines with different *p53* status, we proved that FBI-1 could enhance cancer cell invasion and migration in a p53-independent manner. This hypothesis was confirmed by wild-type p53 manipulation study. It is likely that FBI-1 has more target genes than originally anticipated. Indeed, studies have suggested that FBI-1 could repress retinoblastoma gene, another well-known tumor suppressor gene [20] and could activate fatty-acid synthase gene (*FASN*) [28].

Unlike other epithelial carcinomas, which mainly metastasize through vasculature, “shedding” and “seeding” of ovarian cancer cells from the primary tumor into peritoneal cavity are also common [29]. These tumor dissemination processes involve detachment of tumor cells and degradation of the basement

membrane. Thus, proteolytic activity becomes extremely important in ovarian cancer metastasis because it facilitates the breakthrough and invasion of the mesothelial monolayer and collagen-rich extracellular matrix as well. MT1-MMP/MMP-2/TIMP-2 axis is considered as a central determinant in these processes. Even though the posttranscriptional regulations of MT1-MMP have been extensively studied [30,31], knowledge about its transcriptional regulations remain limited. The GC-rich promoter of MT1-MMP is different from the other MMPs which are composed of a conserved TATA box at promoter region [24]. Recently, transcription factors Sp1, Sp3 and Egr-1 have been identified as potent regulators of MT1-MMP expression in prostate cancer, endothelial and glomerular mesangial cells [24,32,33]. Our present findings support that FBI-1 can directly bind to the promoter of *MT1-MMP*, but not *MMP-2*, and induce MT1-MMP expression in both transcription and protein levels, in a dose dependent manner leading to cell migration and invasion. Induction of MT1-MMP transcription by FBI-1 by mutating the potential binding sites in the MT1-MMP promoter will be performed in our future study. On the other hand, the findings of MTT assays on the two ovarian cancer cell lines harboring different *p53* status suggested that the effect of FBI-1 on cell proliferation might be restricted in cells with intact *p53* function, consistent with findings from a previous report [34].

In conclusion, our data showed that FBI-1 promotes aggressive cancer cell phenotype and its overexpression is associated with poor clinical outcome. The role of FBI-1 in ovarian cancer development and progression also makes it a potential target for therapeutic intervention in ovarian cancer treatment.

Methods

Patient samples and cell lines

220 archival clinical samples (Table 1), including paraffin-embedded tissues of 10 ovarian benign cystadenomas (ages, 20~77 years; mean age, 32 years), 19 ovarian borderline cystadenomas (ages, 20~46 years; mean age, 30 years), 111 ovarian cancers (ages, 23~78 years; average age, 50 years) and corresponding metastatic foci in 63 cases, as well as 17 malignant ascites obtained from stage III/IV ovarian cancer patients, were collected at the time of surgical resection from 1987 to 2005 at Department of Pathology, Queen Mary Hospital, the University of Hong Kong. In addition, 36 paired samples of ovarian cancers and their corresponding normal fallopian tubes and/or contralateral ovaries were processed for snap-frozen blocks followed by storage at -80°C and total RNA and genomic DNA extractions. Both collection and the use of such patient samples were approved

under the Institutional Ethics Review Board. All diagnoses have been confirmed by two pathologists using criteria of the International Federation of Gynecology Oncology (FIGO).

Culture conditions of two immortalized normal human ovarian surface epithelium cell lines (HOSE6-3 and HOSE11-12) and 13 ovarian cancer cell lines (OVCA420, OVCAR-3, SKOV-3, 2780 S, 2780CP, 2008, 2008/C13, SW626, ES2, OC316, DOV13, TOV21G and TOV112D) were described previously [35-38]. Cell lines used in the present study were in culture for less than 6 months.

Immunohistochemistry and western blot

Immunohistochemical staining for FBI-1 (1:400; Abcam Inc, Cambridge, UK; ab36606) was carried out on 220 paraffin-embedded clinical samples with EnVision_Dual Link System (K4061; Dako, North America, Carpinteria, CA, USA) [36]. For negative control, primary antibody was replaced with phosphate buffer saline (PBS). Sections were assessed for both staining intensity and percentage, and the final score was determined as described [35].

For western blot, antibodies specific to FBI-1 (1:600; Abcam), MT1-MMP (1:1000; Sigma; MS221106), p53 (1:1000; Dako; clone DO-7), and GFP (1:1500; Santa Cruz; sc-9996) were used to detect the immunoreactivity according to standard procedures [36]. Our plasmid expressing FBI-1 was tagged with GFP. GFP is a protein composed of 238 amino acids (around 31kDa). Endogenous FBI-1 (75kDa) and GFP-tagged FBI-1 (106kDa) could therefore be differentially detected in 7.5% SDS-PAGE gels using anti-FBI-1 antibody.

RNA and DNA preparation, quantitative real-time PCR (qPCR)

According to the manufacturer's instruction, total RNA and genomic DNA were isolated from frozen tissues and cell lines by using TRIzol reagent (Invitrogen, San Diego, CA, USA) or phenol/chloroform (Invitrogen) respectively. First-strand cDNA was synthesized with oligo-dT primer and SuperScript III Reverse Transcriptase kit (Invitrogen). ABI Prism 7700 Sequence Detection System and SYBR-green PCR master mix (Applied Biosystems) were used for qPCR as described [35].

The primers used for mRNA level evaluation are as follows: FBI-1, forward, 5'-TCTGCGAGAAGGTCATCC-3', and reverse, 5'-CGTAGTTGTGGGCAAAGG-3' [22]; MT-MMP, forward, 5'-ACGGAGGTGATCATCATTGAGG-3' and reverse, 5'-AGATGGGGCTGGACAGACACA-3' [37,39]; MMP-2, forward, 5'-GGCCCTGTCACTCCTGATGAT-3' and reverse, 5'-GGCATCCAGGTTATGGGGGA-3' [36,40]; TIMP-2, forward, 5'-GCGGTCAGT

GAGAAGGAAGTGG-3', and reverse, 5'-CTTGCACTCG-CAGCCCATCTG-3'[41]; GAPDH, forward, 5'-TCCA TGACAACTTGGTATCGTG-3' and reverse, 5'-ACAGT CTTCTGGGTGGCAGTG-3'[35]. Each sample was run in duplicate and normalized with GAPDH.

FBI-1 gene amplification was also assessed by qPCR using the following primers: forward, 5'-GAAC-GAGGGTTTAGTGCA-3' and reverse, 5'-CGAGCT GTTCTGGAGAGA-3' [22]. TRAT1, a single copy gene in ovarian cancer [42], (forward, 5'-CATGTCAGG-TAAGTGGCATT-3'; reverse, 5'-GGGTCTTCTCGT TAGGACTTAG-3'), was served as an internal control. Each sample was verified in duplicate. Scoring \geq two-fold difference in ovarian cancer samples compared with the corresponding normal counterpart indicated gene amplification.

Plasmids

The full-length cDNA of human FBI-1 was amplified from OVCAR3 cells by PCR using FastStart Taq DNA polymerase (Roche Applied Science, Indianapolis, USA) and the primers were forward, 5'-CCCAAGCTTGG-GATGGCCGGCGGCGTGGACGGC-3' and reverse, 5'-GCCTTAAGGCTTAGGCGAGTCCGGCTGTGAA-3'. PCR product was cloned into pEGFP-C3 vector with Hind III and EcoR I. The integrity and accuracy of insert was confirmed by sequencing.

pEGFP-C1-p53 construct expressing wild-type p53 and empty vehicle were generous gifts from Dr. Wilson Ching (Department of Anatomy, The University of Hong Kong, HKSAR, China). Promoter-luciferase reporter genes, pGL3-Basic-MT1-MMP-Luc (bp -500/+112) and pGL3-Basic-shortMT-MMP-luc (bp -180/+112) were kindly provided by Professor Constance E. Brinckerhoff [24,43] (Department of Biochemistry and Medicine, Norris Cotton Cancer Center, Dartmouth Medical School, Lebanon, NH 03756, USA). pGL2-Basic-MMP-2-Luc (full length of promoter of human MMP-2) was a generous gift from Dr. Ety N. Benveniste (Department of Cell Biology, University of Alabama at Birmingham, Birmingham, Alabama).

Transient transfection and luciferase reporter assay

For ectopic expression of FBI-1 and p53, or knockdown of MT1-MMP, cells (OVCA 420 and SKOV-3) were seeded at 90% confluence one day before transient transfection with various amounts of pEGFP-FBI-1, pEGFP-p53, siMT1-MMP (Ambion, USA), or controls using Lipofectamine[™]2000 (Invitrogen) according to manufacturer's instruction. Twenty-four hours after transfection, cells were collected followed by migration and invasion assays and proliferation analysis. To assess the transcriptional activities of MT1-MMP and MMP-2, 1×10^5 cells were grown in 24-well plates and

transiently co-transfected with indicated dosage of pEGFP-FBI-1 construct and pGL3-Basic-MT1-MMP-Luc or pGL2-Basic-MMP-2-Luc reporter plasmids. pRL-SV40-Luc was used as internal control, whereas corresponding empty vectors were served as negative controls. After 48 h incubation, cells were lysed for luciferase activity analysis using the Dual-Luciferase Reporter Assay System (Promega, Madison, WI). *Renilla* luciferase activities were used to normalize the transfection efficiency. Each experiment was repeated twice in duplicate wells.

Establishment of FBI-1 stable knockdown cells

For stable silencing, human FBI-1-specific shRNA (Sure-Silencing shRNA constructs) and control shRNA vector (pGeneClip[™] puromycin vector) were purchased from SuperArray (SABiosciences Corporation, Frederick, USA), transfected into OVCA 420 and SKOV-3 cells, and selected with puromycin as published previously [36]. Knockdown efficiency was confirmed by qPCR and immunoblotting analysis.

In Vitro migration and invasion assays

To determine the impact of FBI-1 on cell mobility, transient overexpressing or stable knockdown FBI-1 cells and their control cells were counted and equally plated on the upper compartments of the 24-wells, 8- μ m pore size Transwell chambers (BD Biosciences, San Jose, CA). Cell migration and invasion assays were performed with self-coated Gelatin and Matrigel, respectively. After 24 h, the migrated and invaded cells on the lower surface of membrane were fixed and stained with methanol mixed crystal violet. All assays were run in independently three times.

Proliferation assay

Effect of FBI-1 with or without wild type p53 on cell proliferation was determined by 3-[4,5-dimethylthiazol-2-yl]-2,5-diphenyl-tetrazolium bromide (MTT) assay as previously described [36]. Every experiment was repeated twice in triplicate wells, separately.

Chromatin immunoprecipitation (ChIP)

Confluent OVCA 420 and SKOV-3 cells grown on 10-cm dish were cross-linked by adding 1% formaldehyde for 10 min. After stopping the reaction with 1.25 M glycine solution and washing with PBS, cells were suspended in RIPA buffer (150 mM NaCl, 1% NP-40, 0.5% sodium deoxycholate, 0.1% SDS, 50 mM Tris, and 5 mM EDTA) containing protease inhibitor cocktail and sonicated until most of the DNA fragments ranged from 500 to 1000bp. 50 μ l of soluble lysate was saved as 'input sample'. The rest of the lysate was pre-cleared with protein A/G beads and salmon sperm DNA. Anti-

FBI-1 antibody and 30 μ l protein A/G beads were then added to the pre-cleared samples. Samples with no antibody incubation were used as negative control. Beads were centrifuged and washed with RIPA buffer, IP buffer (0.5 M LiCl, 0.1 M Tris, 1%NP-40, and 1% sodium deoxycholate), and then RIPA buffer. The bound material was eluted from the beads at 85°C for 10 min in elution buffer (0.1 M NaHCO₃ and 1%SDS) and the RNA and protein was digested using RNase A and proteinase K, respectively. DNA was precipitated and purified by using phenol/chloroform. The following primers were used to detect MT1-MMP promoter sequences, which is designed using Primer3 (v.0.4.0) software based on the sequence of luciferase reporter construct [24]: forward, 5'-CCGACAGCGGTCTAGGAAT-3', reverse, 5'-AGACAACGGGAGGGTCTTG-3'.

Statistical analysis

The clinical-pathological features and the data from *in vitro* assays were analyzed using Statistical Package for Social Science 15.0 for windows (SPSS Inc., Chicago, IL, USA) software. Spearman's rho test, Kruskal-Wallis rank test, Mann-Whitney test, Kaplan-Meier method (using log-rank test), Cox's regression model were used to assess correlation, difference of multiple groups, difference between two groups of non-parametric data, survival probability and multivariate survival analysis, respectively. P value <0.05 was considered to be significant.

Acknowledgements

Our authors would like to thank Dr. Wilson Ching, Prof. Constance E. Brinckerhoff, and Dr. Ety N. Benveniste for their generous gifts of the plasmids (see Methods).

Author details

¹Department of Pathology and, The University of Hong Kong, HKSAR, China. ²Department of Obstetrics and Gynaecology, The University of Hong Kong, HKSAR, China. ³Department of Pathology, West China Hospital, Sichuan University, Chengdu, China. ⁴Cancer Research UK laboratories, Department of Surgery and Cancer, Imperial College London, London, UK. ⁵Department of Experimental Therapeutics, Division of Cancer Medicine, the University of Texas M. D. Anderson Cancer Center, Houston, Texas, USA.

Authors' contributions

LLJ designed and performed the experiments, interpreted the results and prepared the manuscript under the supervision of ANYC, MKYS and OGWW who also conceived the study and critically revised the manuscript. ANYC, KFT and HYSN provided the clinical material while ANYC also facilitated laboratory settings for the experiments. WFL and XFL provided cell lines and contributed to the manuscript editing. ESYW and HYC provided the technical assistance for experiments. All authors approve the final version of the manuscript.

Competing interests

The authors declare that they have no competing interests.

Received: 2 July 2010 Accepted: 21 December 2010
Published: 21 December 2010

References

1. Auersperg N, Wong AS, Choi KC, Kang SK, Leung PC: **Ovarian surface epithelium: biology, endocrinology, and pathology.** *Endocr Rev* 2001, **22**:255-288.
2. Jemal A, Siegel R, Ward E, Murray T, Xu J, Thun MJ: **Cancer statistics, 2007.** *CA Cancer J Clin* 2007, **57**:43-66.
3. Chernov AV, Sounni NE, Remacle AG, Strongin AY: **Epigenetic control of the invasion-promoting MT1-MMP/MMP-2/TIMP-2 axis in cancer cells.** *J Biol Chem* 2009, **284**:12727-12734.
4. Noel A, Maillard C, Rocks N, Jost M, Chabotoux V, Sounni NE, Maquoi E, Cataldo D, Foidart JM: **Membrane associated proteases and their inhibitors in tumour angiogenesis.** *J Clin Pathol* 2004, **57**:577-584.
5. Ruangpanit N, Price JT, Holmbeck K, Birkedal-Hansen H, Guenzler V, Huang X, Chan D, Bateman JF, Thompson EW: **MT1-MMP-dependent and -independent regulation of gelatinase A activation in long-term, ascorbate-treated fibroblast cultures: regulation by fibrillar collagen.** *Exp Cell Res* 2002, **272**:109-118.
6. Strongin AY: **Mislocalization and unconventional functions of cellular MMPs in cancer.** *Cancer Metastasis Rev* 2006, **25**:87-98.
7. Strongin AY, Collier I, Bannikov G, Marmer BL, Grant GA, Goldberg GL: **Mechanism of cell surface activation of 72-kDa type IV collagenase. Isolation of the activated form of the membrane metalloprotease.** *J Biol Chem* 1995, **270**:5331-5338.
8. Clark IM, Swingle TE, Sampieri CL, Edwards DR: **The regulation of matrix metalloproteinases and their inhibitors.** *Int J Biochem Cell Biol* 2008, **40**:1362-1378.
9. Moss NM, Barbolina MV, Liu Y, Sun L, Munshi HG, Stack MS: **Ovarian cancer cell detachment and multicellular aggregate formation are regulated by membrane type 1 matrix metalloproteinase: a potential role in l.p. metastatic dissemination.** *Cancer Res* 2009, **69**:7121-7129.
10. Barbolina MV, Adley BP, Ariztia EV, Liu Y, Stack MS: **Microenvironmental regulation of membrane type 1 matrix metalloproteinase activity in ovarian carcinoma cells via collagen-induced EGR1 expression.** *J Biol Chem* 2007, **282**:4924-4931.
11. Afzal S, Lalani EN, Poulsom R, Stubbs A, Rowlinson G, Sato H, Seiki M, Stamp GW: **MT1-MMP and MMP-2 mRNA expression in human ovarian tumors: possible implications for the role of desmoplastic fibroblasts.** *Hum Pathol* 1998, **29**:155-165.
12. Adley BP, Gleason KJ, Yang XJ, Stack MS: **Expression of membrane type 1 matrix metalloproteinase (MMP-14) in epithelial ovarian cancer: high level expression in clear cell carcinoma.** *Gynecol Oncol* 2009, **112**:319-324.
13. Munkert A, Helmchen U, Kemper MJ, Bubenheim M, Stahl RA, Harendza S: **Characterization of the transcriptional regulation of the human MT1-MMP gene and association of risk reduction for focal-segmental glomerulosclerosis with two functional promoter SNPs.** *Nephrol Dial Transplant* 2009, **24**:735-742.
14. Pessler F, Pendergrast PS, Hernandez N: **Purification and characterization of FBI-1, a cellular factor that binds to the human immunodeficiency virus type 1 inducer of short transcripts.** *Mol Cell Biol* 1997, **17**:3786-3798.
15. Lee DK, Kang JE, Park HJ, Kim MH, Yim TH, Kim JM, Heo MK, Kim KY, Kwon HJ, Hur MW: **FBI-1 enhances transcription of the nuclear factor-kappaB (NF-kappaB)-responsive E-selectin gene by nuclear localization of the p65 subunit of NF-kappaB.** *J Biol Chem* 2005, **280**:27783-27791.
16. Laudes M, Christodoulides C, Sewter C, Rochford JJ, Considine RV, Sethi JK, Vidal-Puig A, O'Rahilly S: **Role of the POZ zinc finger transcription factor FBI-1 in human and murine adipogenesis.** *J Biol Chem* 2004, **279**:11711-11718.
17. Maeda T, Merghoub T, Hobbs RM, Dong L, Maeda M, Zakrzewski J, van den Brink MR, Zelent A, Shigematsu H, Akashi K, et al: **Regulation of B versus T lymphoid lineage fate decision by the proto-oncogene LRF.** *Science* 2007, **316**:860-866.
18. Maeda T, Hobbs RM, Merghoub T, Guernah I, Zelent A, Cordon-Cardo C, Teruya-Feldstein J, Pandolfi PP: **Role of the proto-oncogene Pokemon in cellular transformation and ARF repression.** *Nature* 2005, **433**:278-285.
19. Schubot FD, Tropea JE, Waugh DS: **Structure of the POZ domain of human LRF, a master regulator of oncogenesis.** *Biochem Biophys Res Commun* 2006, **351**:1-6.
20. Jeon BN, Yoo JY, Choi WI, Lee CE, Yoon HG, Hur MW: **Proto-oncogene FBI-1 (Pokemon/ZBTB7A) represses transcription of the tumor suppressor Rb**

- gene via binding competition with Sp1 and recruitment of co-repressors. *J Biol Chem* 2008, **283**:33199-33210.
21. Maeda T, Ito K, Merghoub T, Polisenio L, Hobbs RM, Wang G, Dong L, Maeda M, Dore LC, Zelent A, et al: **LRF is an essential downstream target of GATA1 in erythroid development and regulates BIM-dependent apoptosis.** *Dev Cell* 2009, **17**:527-540.
 22. Apostolopoulou K, Pateras IS, Evangelou K, Tsantoulis PK, Lontos M, Kittas C, Tiniakos DG, Kotsinas A, Cordon-Cardo C, Gorgoulis VG: **Gene amplification is a relatively frequent event leading to ZBTB7A (Pokemon) overexpression in non-small cell lung cancer.** *J Pathol* 2007, **213**:294-302.
 23. Hamroun D, Kato S, Ishioka C, Claustres M, Beroud C, Soussi T: **The UMD TP53 database and website: update and revisions.** *Hum Mutat* 2006, **27**:14-20.
 24. Lohi J, Lehti K, Valtanen H, Parks WC, Keski-Oja J: **Structural analysis and promoter characterization of the human membrane-type matrix metalloproteinase-1 (MT1-MMP) gene.** *Gene* 2000, **242**:75-86.
 25. Ozols RF: **Systemic therapy for ovarian cancer: current status and new treatments.** *Semin Oncol* 2006, **33**:53-11.
 26. Gozzetti A, Davis EM, Espinosa R, Fernald AA, Anastasi J, Le Beau MM: **Identification of novel cryptic translocations involving IGH in B-cell non-Hodgkin's lymphomas.** *Cancer Res* 2002, **62**:5523-5527.
 27. Maeda T, Hobbs RM, Pandolfi PP: **The transcription factor Pokemon: a new key player in cancer pathogenesis.** *Cancer Res* 2005, **65**:8575-8578.
 28. Choi WI, Jeon BN, Park H, Yoo JY, Kim YS, Koh DI, Kim MH, Kim YR, Lee CE, Kim KS, et al: **Proto-oncogene FBI-1 (Pokemon) and SREBP-1 synergistically activate transcription of fatty-acid synthase gene (FASN).** *J Biol Chem* 2008, **283**:29341-29354.
 29. Naora H, Montell DJ: **Ovarian cancer metastasis: integrating insights from disparate model organisms.** *Nat Rev Cancer* 2005, **5**:355-366.
 30. Gingras D, Beliveau R: **Emerging concepts in the regulation of membrane-type 1 matrix metalloproteinase activity.** *Biochim Biophys Acta* 2010, **1803**:142-150.
 31. Poincloux R, Lizarraga F, Chavrier P: **Matrix invasion by tumour cells: a focus on MT1-MMP trafficking to invadopodia.** *J Cell Sci* 2009, **122**:3015-3024.
 32. Sroka IC, Nagle RB, Bowden GT: **Membrane-type 1 matrix metalloproteinase is regulated by sp1 through the differential activation of AKT, JNK, and ERK pathways in human prostate tumor cells.** *Neoplasia* 2007, **9**:406-417.
 33. Haas TL, Stitelman D, Davis SJ, Apte SS, Madri JA: **Egr-1 mediates extracellular matrix-driven transcription of membrane type 1 matrix metalloproteinase in endothelium.** *J Biol Chem* 1999, **274**:22679-22685.
 34. Choi WI, Jeon BN, Yun CO, Kim PH, Kim SE, Choi KY, Kim SH, Hur MW: **Proto-oncogene FBI-1 represses transcription of p21CIP1 by inhibition of transcription activation by p53 and Sp1.** *J Biol Chem* 2009, **284**:12633-12644.
 35. Au CW, Siu MK, Liao X, Wong ES, Ngan HY, Tam KF, Chan DC, Chan QK, Cheung AN: **Tyrosine kinase B receptor and BDNF expression in ovarian cancers - Effect on cell migration, angiogenesis and clinical outcome.** *Cancer Lett* 2009, **281**:151-161.
 36. Siu MK, Wong ES, Chan HY, Ngan HY, Chan KY, Cheung AN: **Overexpression of NANOG in gestational trophoblastic diseases: effect on apoptosis, cell invasion, and clinical outcome.** *Am J Pathol* 2008, **173**:1165-1172.
 37. Liao X, Siu MK, Au CW, Wong ES, Chan HY, Ip PP, Ngan HY, Cheung AN: **Aberrant activation of hedgehog signaling pathway in ovarian cancers: effect on prognosis, cell invasion and differentiation.** *Carcinogenesis* 2009, **30**:131-140.
 38. Clauss A, Ng V, Liu J, Piao H, Russo M, Vena N, Sheng Q, Hirsch MS, Bonome T, Matulonis U, et al: **Overexpression of elafin in ovarian carcinoma is driven by genomic gains and activation of the nuclear factor kappaB pathway and is associated with poor overall survival.** *Neoplasia* 12:161-172.
 39. Mori M, Mimori K, Shiraishi T, Fujie T, Baba K, Kusumoto H, Haraguchi M, Ueo H, Akiyoshi T: **Analysis of MT1-MMP and MMP2 expression in human gastric cancers.** *Int J Cancer* 1997, **74**:316-321.
 40. Janowska-Wieczorek A, Marquez LA, Nabholz JM, Cabuhat ML, Montano J, Chang H, Rozmus J, Russell JA, Edwards DR, Turner AR: **Growth factors and cytokines upregulate gelatinase expression in bone marrow CD34(+) cells and their transmigration through reconstituted basement membrane.** *Blood* 1999, **93**:3379-3390.
 41. Zhou HY, Wan KF, Ip CK, Wong CK, Mak NK, Lo KW, Wong AS: **Hepatocyte growth factor enhances proteolysis and invasiveness of human nasopharyngeal cancer cells through activation of PI3K and JNK.** *FEBS Lett* 2008, **582**:3415-3422.
 42. Woenckhaus J, Steger K, Sturm K, Munstedt K, Franke FE, Fenic I: **Prognostic value of PIK3CA and phosphorylated AKT expression in ovarian cancer.** *Virchows Arch* 2007, **450**:387-395.
 43. Petrella BL, Lohi J, Brinckerhoff CE: **Identification of membrane type-1 matrix metalloproteinase as a target of hypoxia-inducible factor-2 alpha in von Hippel-Lindau renal cell carcinoma.** *Oncogene* 2005, **24**:1043-1052.

doi:10.1186/1476-4598-9-318

Cite this article as: Jiang et al.: Overexpression of proto-oncogene FBI-1 activates membrane type 1-matrix metalloproteinase in association with adverse outcome in ovarian cancers. *Molecular Cancer* 2010 **9**:318.

Submit your next manuscript to BioMed Central and take full advantage of:

- Convenient online submission
- Thorough peer review
- No space constraints or color figure charges
- Immediate publication on acceptance
- Inclusion in PubMed, CAS, Scopus and Google Scholar
- Research which is freely available for redistribution

Submit your manuscript at
www.biomedcentral.com/submit

